

GC PowerStation™

A New Way to Look at CAM!

GC-PowerStation is CAM software for intelligent fabrication. It combines ease-of-use with powerful functionality, providing total control of manufacturing data. With GC-PowerStation, PCB manufacturability is verified up-front; saving weeks of costly revision spins. You receive the necessary tools to build the board right the first time.

GC-PowerStation Applications

- Bare-board fabrication
- Bare-board test preparation
- Design proofing
- Design modification
- Photo-plot artwork generation
- Sales quoting

Design for Manufacturability and Yield Enhancement

The Design for Manufacturability (DFM) engine searches for fabrication issues and discovers areas where yields may be increased. GraphiCode's Contour Technology produces fast and accurate results for the most complex board designs, including composite data.

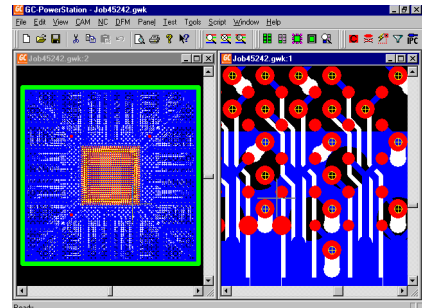
GC-PowerStation enhances PCB yield by using a series of built-in intelligent features. A prime example concerns solder masks. A solder mask may easily be created through editing commands but GC-PowerStation goes beyond the basics to improve the quality of the solder mask.

Using the "Enhance Solder Mask" function, GC-PowerStation prevents solder bridging by increasing masks in areas where pads are so close to nearby tracks that their copper would be exposed with specified mask tolerances. "Enhance Solder Mask" and other automated features effortlessly bring new quality and enhanced yield to the fabrication process.

Flexible Input

Automatic file format detection, automatic aperture conversion, and automatic aperture and layer assignment are all standards of the File Import. Supported formats include:

- Gerber (RS-274-D) and (RS-274-X)
- DPF and JOB (Barco)
- HPGL
- Excellon
- EDIF 4 0 0
- ODB++
- FIRE/Autoplot
- Emma
- Sieb & Meyer
- AutoCAD - DXF, DWG
- Orbotech Back Up (OBU)



New User Interface

Flexibility

GC-PowerStation couples simplicity with flexibility. The user interface is customizable – presenting the information you need exactly where you want to see it. Multiple views, personalized hot-keys and toolbars allow full user control of the interface. You can even create new functionality with GraphiCode's GC-BASIC programming language.

Netlist Extraction

GC-PowerStation excels at netlist extraction and test point selection. Applying GraphiCode's proprietary Contour Technology, GC-PowerStation succeeds where other CAM Software falters. Using GC-PowerStation, composite layers, sketched data, and multiple ground planes may be extracted with ease. Netlist output files include IPC-D-350 and IPC-D-356(A) along with direct machine formats.

Value

GC-PowerStation delivers performance and features unmatched in the industry. It also reduces manufacturing production expenses. GC-PowerStation runs on the desktop PC platform, eliminating the need to run expensive and difficult to use workstations. GC-PowerStation's off-line verification capabilities ensure efficient work flow to manufacturing equipment.

Performance

As a native 32-bit application, GC-PowerStation delivers workstation performance on your PC desktop. Engineered to process large files, GC-PowerStation dramatically increases turnaround on even the most complex jobs. GC-PowerStation also works smarter. A powerful scripting capability automates repetitive tasks and standard operations to bring new efficiencies to your process.

PowerStationTM

A New Way to Look at CAM!

GC-Services

GraphiCode offers superior worldwide services, support, and training through GC-Services. Our GC-Services team can help you with:

- Boost manufacturing efficiency
- Quickly resolve Gerber translation issues
- Benefit from our rapid turn-around times and accurate programming

Communicate Design Concerns with Your Customers

Thousands of PCB designers use GC-Prevue to verify the designs and view the Gerber data. By using GraphiCode products, designers and manufacturers can communicate using a common data format and software tools. GC-Prevue is available free on GraphiCode's web site at: www.graphicode.com

Worldwide Support and Sales

GraphiCode's technical support and sales staff can be found throughout the world. Offices are located in China, United Kingdom, France, Germany, Hong Kong, India, Korea, Singapore, Sweden, Taiwan, and the United States. Visit our web site for your local representative's complete contact information.

System Requirements

- 400MHz Pentium or equivalent preferred
- Windows 2000, NT(v4.x), 95 or 98: NT or 2000 preferred (runs on Windows 2000 with multiple monitors)
- 64MB RAM min., 256MB preferred
- 2 GB+ hard disk
- CD-ROM
- Windows accelerator video card with 2MB or more video DRAM
- 17" or larger monitor, 800x600 or greater resolution

GraphiCode

MANIA Technologie

6608 216th St. SW, Suite 100
Mountlake Terrace, WA 98043 USA
phone: (425) 672-1980
fax: (425) 672-2705
sales@graphicode.com
<http://www.graphicode.com>